



EDITOR, Prof. Richard B. Rose
<zygomate@att.net>



CONTENTS

The Transition of Ottoman Posts to
Albanian Posts (1913)
 Otto Graf 19

The Turkish Consulate in Tiflis
 Peter A. Michalove 26

Turkish Postal Censorship in World
War II.
 Peter A. Michalove 27

Background for a Postmark
from İnebolu.
 The Editor 29

"The Tughra Stamps, First Issues
of the Ottoman Empire"
by Mehmet Basaran 29

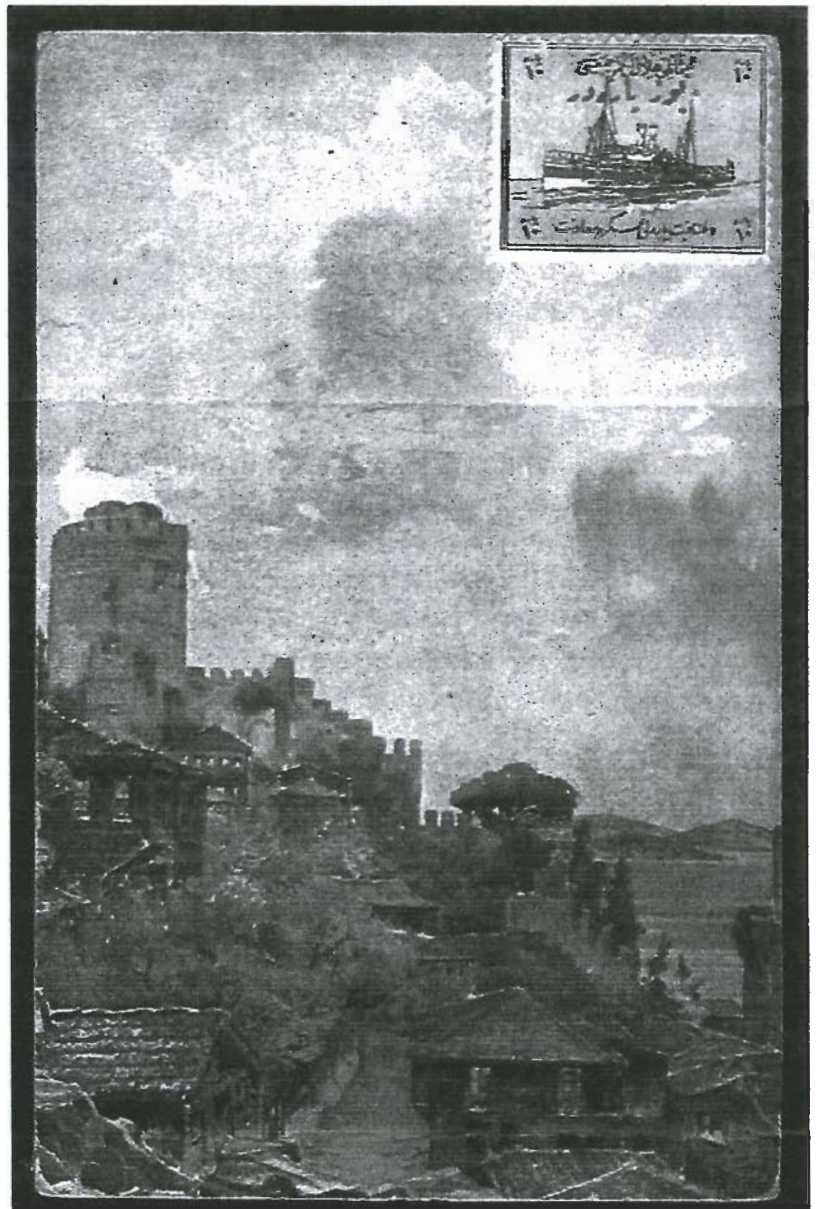


With this issue, the Editor inaugurates a suggestion from Carl Catherman, to feature a post card on the cover. This charming example is from member Uzay Togay.

☞ The card begs the question as to the identity and purpose of the stamp or label affixed to the upper right corner. Readers with answers are urged to contact Carl Catherman (address is on the Society page, inside back cover).

Send jpg's of any interesting post cards (preferably with a story) which you have (black& white is fine) and they'll be considered for front page exposure.

The Editor.



President's Letter

Dear Fellow Members,

As I mentioned in the January issue, our ONEPS 2007 annual meeting will be held on Saturday, September 1, in conjunction with BALPEX. The show runs from Aug. 31 to Sept. 2 (Labor Day weekend) in Hunt Valley, Maryland. To promote the Ottoman and Middle East philatelic areas, we need as many member exhibits as possible,